

# Penile Soft Tissue Swelling

Sunitha Ramachandra<sup>1\*</sup>, Lakshmi Rao<sup>1</sup>, Masoud Al-Kindi<sup>1</sup> and Prem Ramakrishnan<sup>2</sup>

<sup>1</sup>Department of Histopathology, Armed Forces Hospital, Muscat, Oman

<sup>2</sup>Department of Urology, Armed Forces Hospital, Muscat, Oman

## ARTICLE INFO

DOI 10.5001/omj.2015.61

### Article history:

Received: 8 January 2014

Accepted: 24 February 2014

**A** two-year-old male presented to the surgical outpatient department of the Armed Forces Hospital, Muscat, with penile shaft swelling, which had been present for 10 months. He had no history of trauma, but had undergone circumcision one year prior and the swelling had developed after the procedure. He was referred to a urologist for further management.

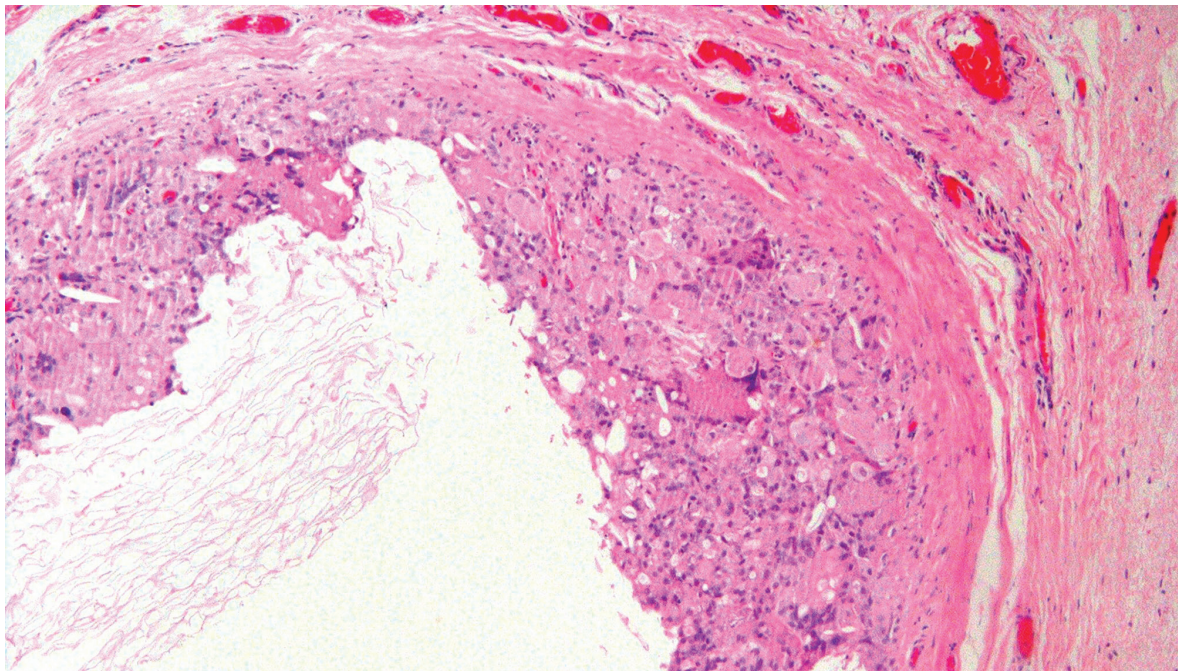
Clinical examination showed a soft swelling arising from the left lateral aspect of the penile shaft. Based on a presumptive diagnosis of soft tissue

mass (fibroma), the swelling was excised and sent for histopathological assessment [Figure 1]. The specimen was a soft cystic nodule measuring 1cm.

### Questions

1. What is the histological diagnosis?
2. What is the best treatment option?

*Answers to the quiz, and the full article, can be found online at [www.omjournal.org](http://www.omjournal.org).*



**Figure 1:** Hematoxylin and eosin staining showed cyst wall lined by histiocytes, cholesterol clefts, and giant cells with luminal keratin, magnification=10×.

### CME CREDIT

You may earn CME credits by reading the quiz and answering the questions online. Answers for the quiz can be found online ([www.omjournal.org](http://www.omjournal.org)). CME credits are awarded by Oman Medical Specialty Board by the Continued Professional Development Department.